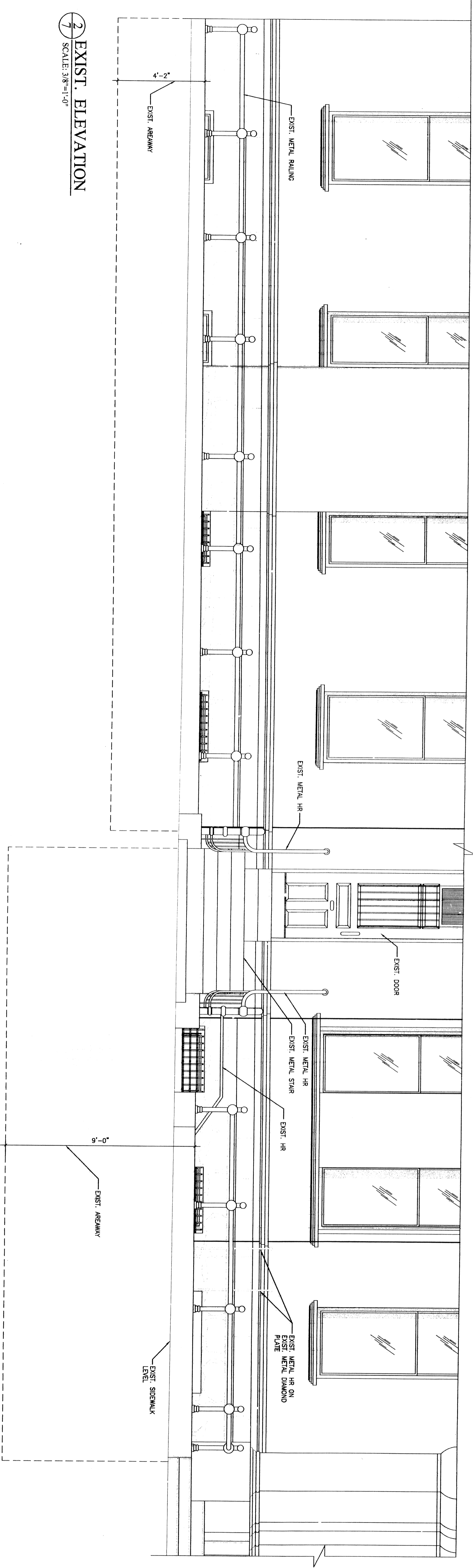


1 PROPOSED ELEVATION WITH WHEELCHAIR LIFT
SCALE: 3/8"=1'-0"



2 EXIST. ELEVATION
SCALE: 3/8"=1'-0"

- Notes
1. Gregg Rothstein Architect has not been retained for this project.
 2. Drawings are to be deemed complete until approved by the City of New York, NY.
 3. Dimensions shown are based on the center of the lot.
 4. All work shall be in accordance with the specifications of the City of New York.
 5. General Contractor and plumber to coordinate plumbing.
 6. General Contractor and plumber to coordinate electrical.
 7. Architect's responsibility is limited to the professional fee on this project.

DRAWING SYMBOLS

- STANDARD SYMBOLS
- ⊗ DOOR DESIGNATION (SEE DOOR SCHEDULE)
 - ⊗ ROOM NUMBER
 - ⊗ STAIR NUMBER
 - ⊗ EQUIPMENT DESIGNATION (SEE EQUIPMENT SCHEDULE)
 - ⊗ LOT LINE
- ALPHA/NUMERICAL PARTITION TYPE NUMBER
- SECTION NUMBER - DIFFERENT DRAWING
- SHEET NUMBER

- REVISION SYMBOL
- CONSTRUCTION LEGEND
- TO REMAIN
 - TO BE REMOVED
 - NEW CONSTRUCTION
 - NEW CMU WALL
 - NEW BRICK MASONRY WALL
 - NEW METAL STUD WALL W/ 5/8" GIB BOARD
 - SIDES HR PATED CONST. (A FILE NO. WP 1200)
 - EXIT SIGN

No.	Revision/Issue	Date

Scale: AS NOTED

ROR MANAGEMENT

Gregg Rothstein Architect

219 SURREY RD. HILLSIDE, New Jersey 07205 (908) 351-2809

ARCHITECT ASSUMES NO RESPONSIBILITY FOR ANY WORK WHICH DEVIATES FROM APPROVED PLANS. THE CONTRACTOR MUST OBTAIN WRITTEN APPROVAL FOR ANY CHANGES FROM THE ARCHITECT BEFORE COMMENCING SUCH WORK. ARCHITECT HAS NOT BEEN RETAINED FOR SUPERVISION.

IT IS A VIOLATION OF THE LAW FOR ANY PERSON, UNLESS ACTING UNDER THE DIRECTION OF A LICENSED ARCHITECT, TO ALTER AN ITEM IN ANY WAY. IF AN ITEM BEARING THE SEAL OF AN ARCHITECT IS ALTERED, THE ALTERING ARCHITECT SHALL AFFIX TO HIS ITEM THE SEAL AND THE NOTATION "ALTERED BY" FOLLOWED BY HIS SIGNATURE AND THE DATE OF SUCH ALTERATION, AND A SPECIFIC DESCRIPTION OF THE ALTERATION.

Project: 101 WEST 85th STREET, NY, NY

ELEVATIONS

Scale: 07-07-09

Project No: 0721

Drawn By: AAA

Check By: GR

A-007.00

7 OF 8

120164464